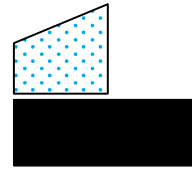
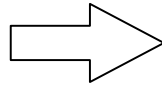
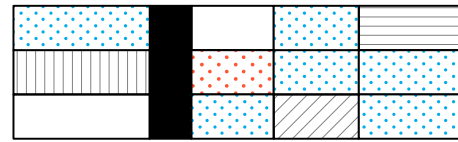
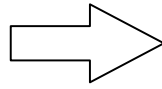
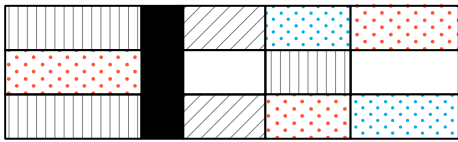


POOL  
LEBER  
ARCH

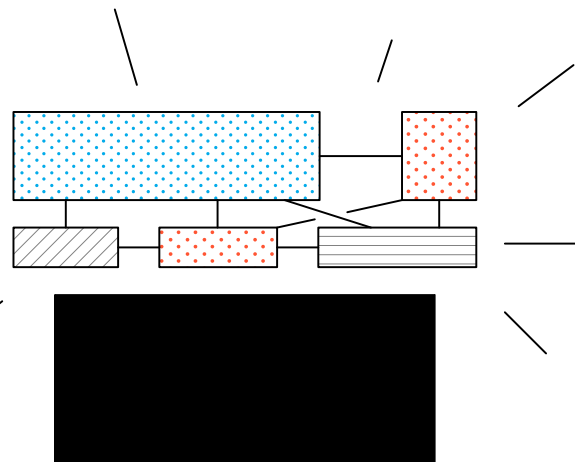
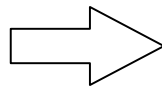
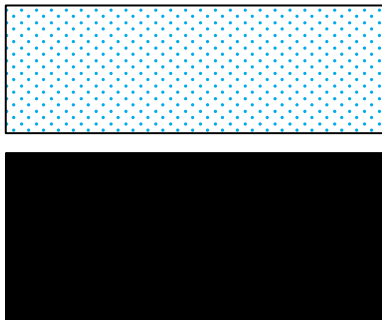
**der  
flexible  
wohngrundriss**



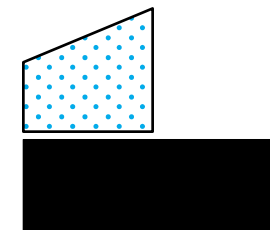
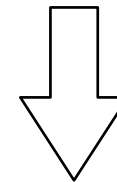
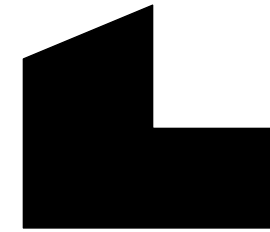
**1 zu 2**



**1 zu 1\***

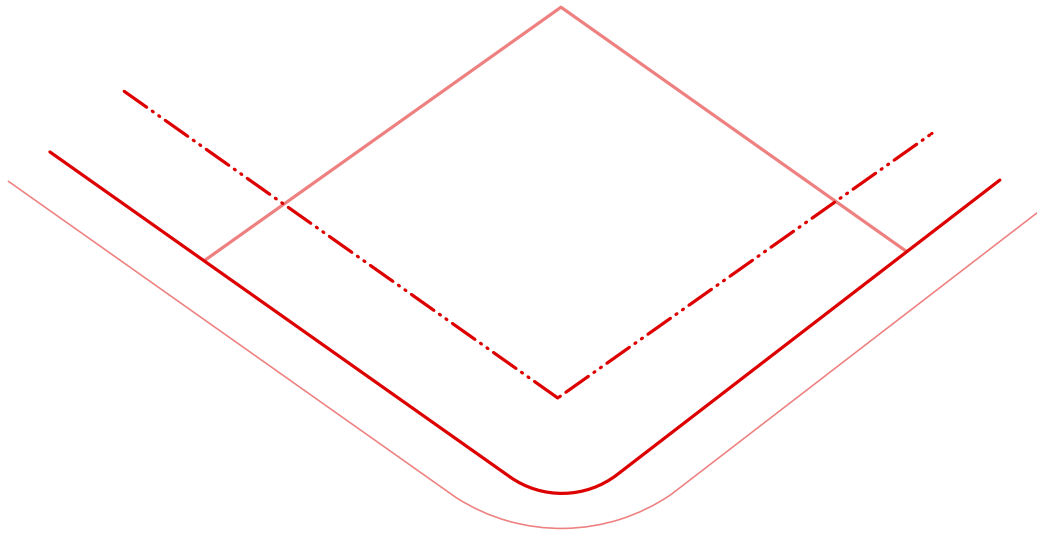


**1 zu 5**

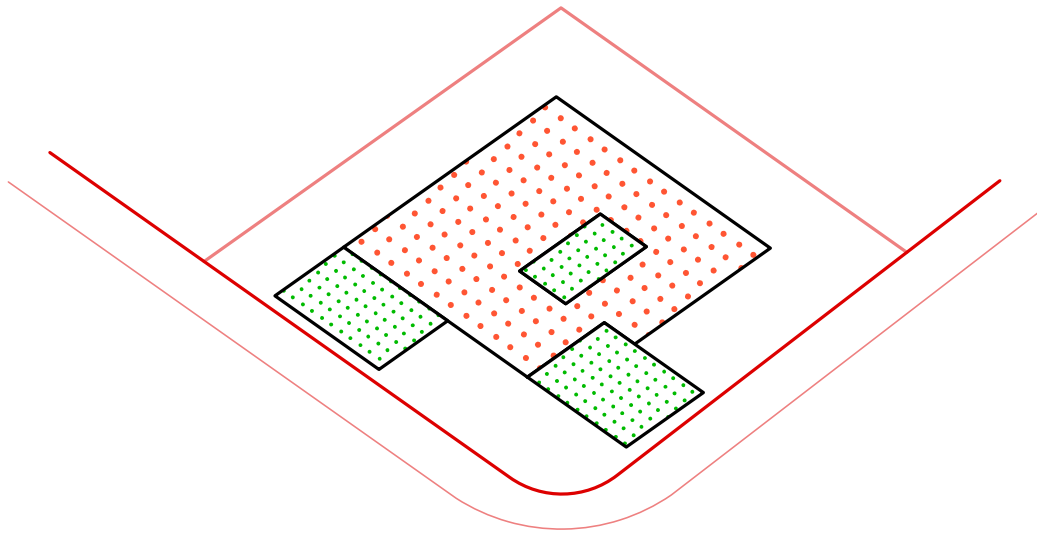


**1 zu 2**

haus d.

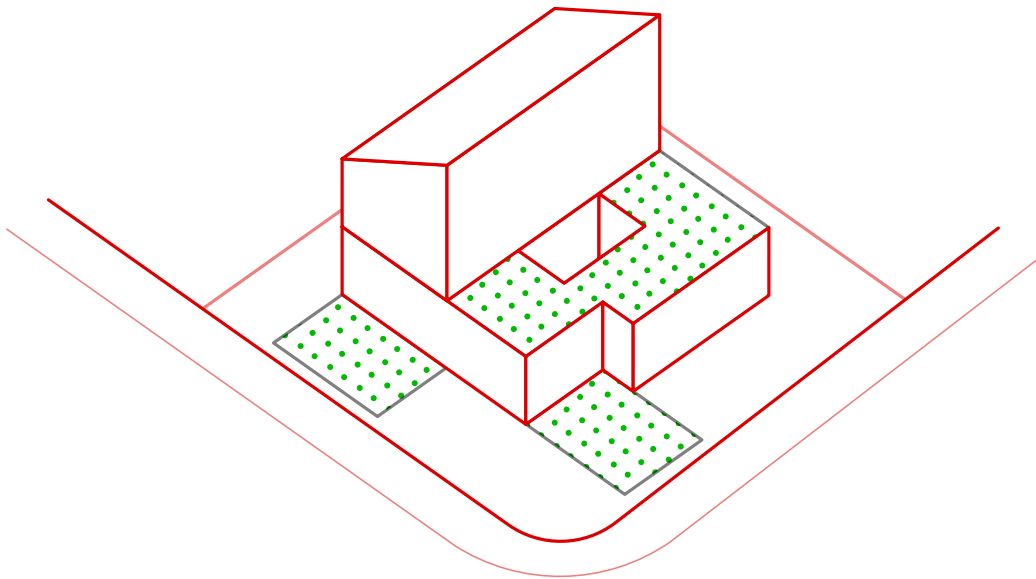
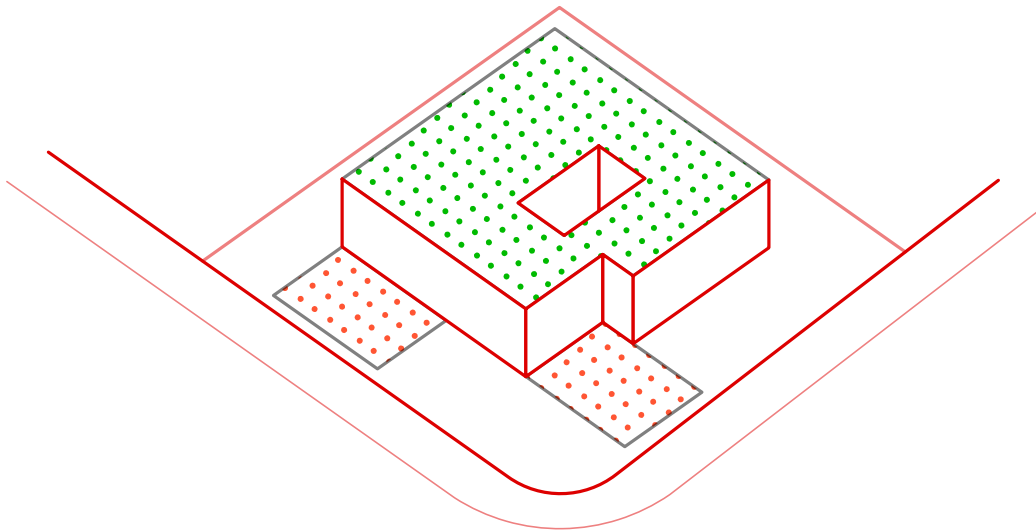


baulinie im sueden  
åPÛ ĐÔÒ×ÔÔÑÔÑĐääÝÖ

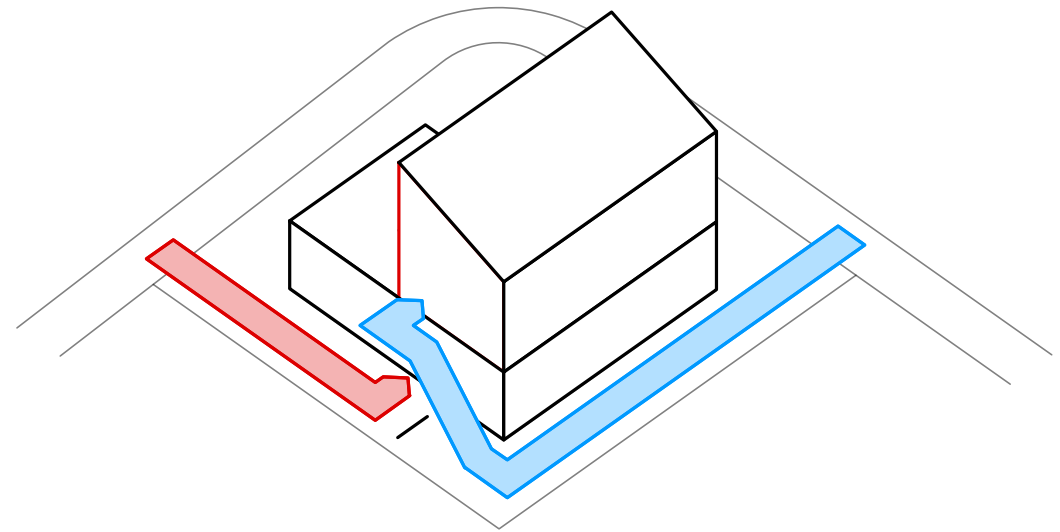


ĐÔÒ×ÔÔÑÔÑĐääÝÖ  
introvertierte hoeft

**garten auf dem dach**



**zwei haeuser**



**.... mit zwei adressen**

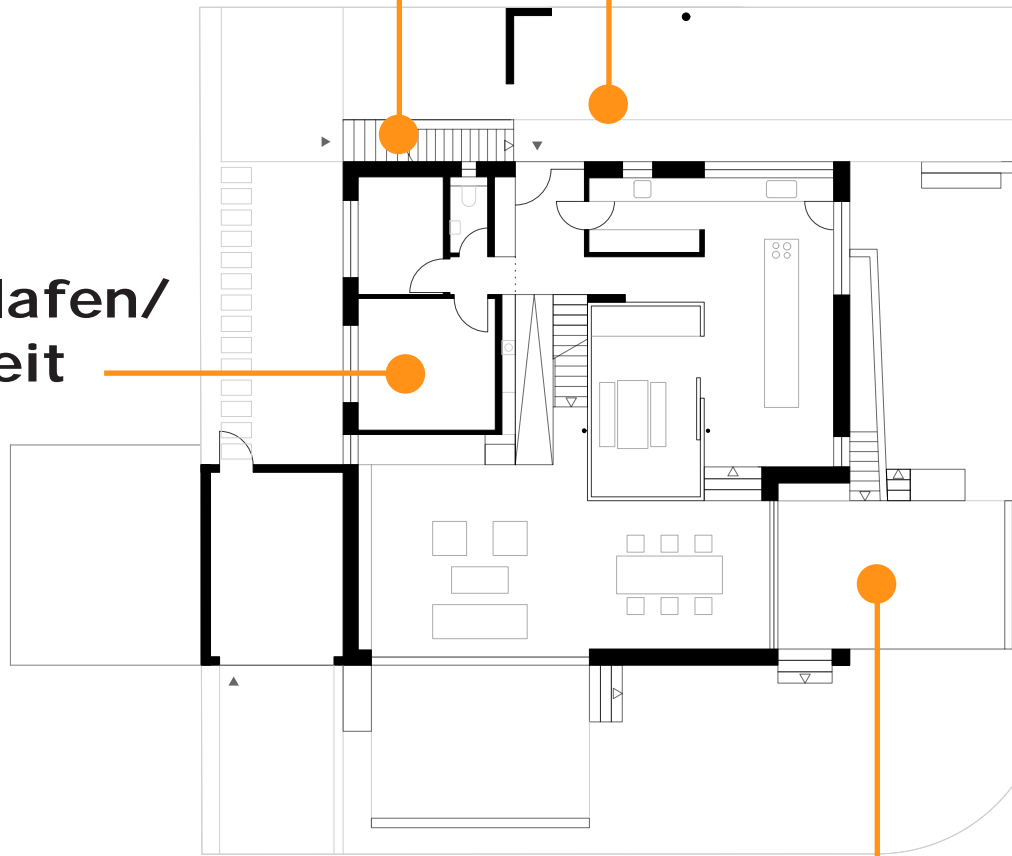




zugang oben

zugang unten

schlafen/  
arbeit



introvertierte hoefe

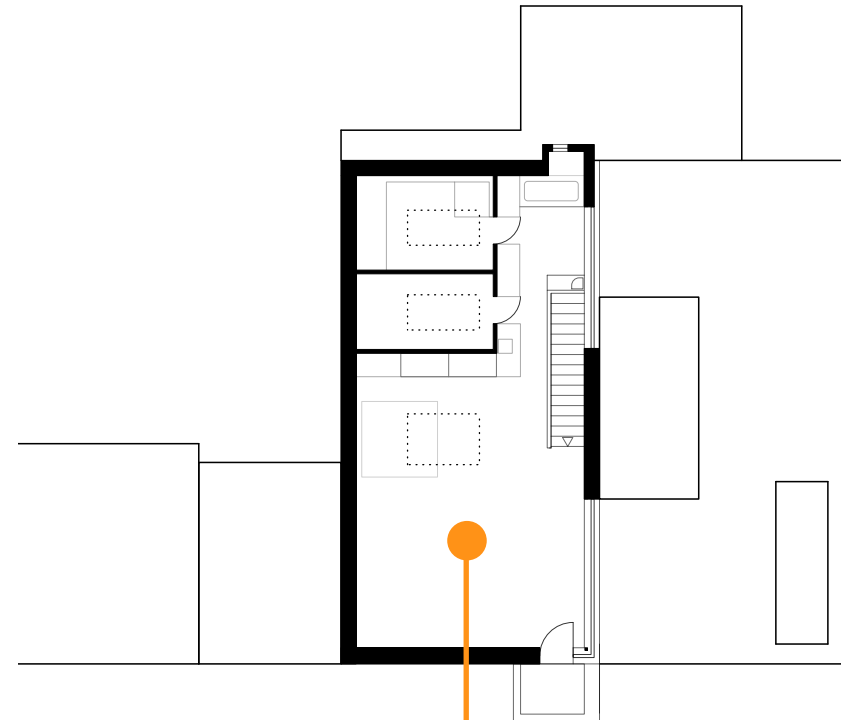
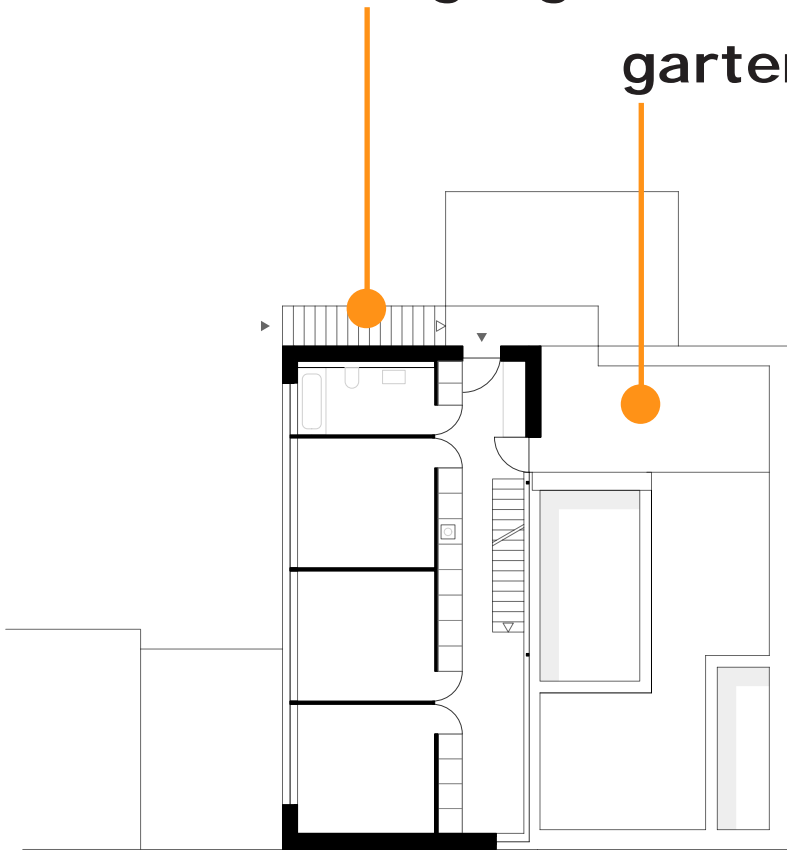
zwei haeuser

**EG**



zugang

garten

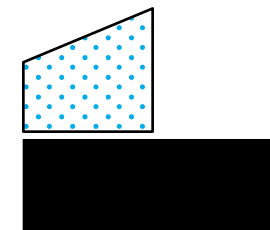
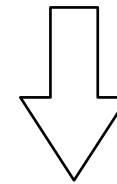
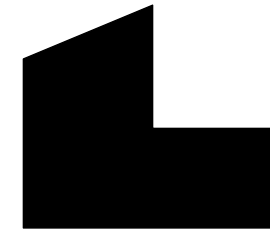


elternschlafen  
wohn kuche essen

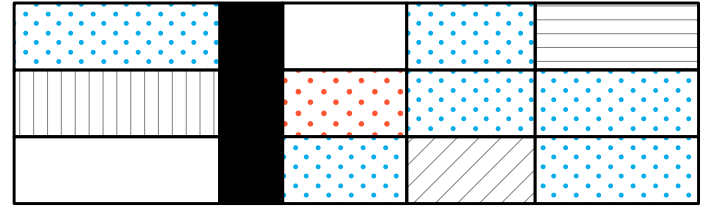
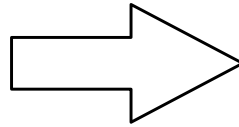
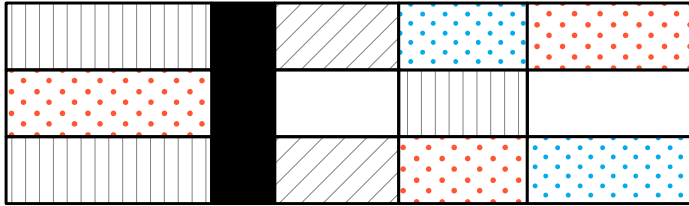
**OG**







**1 zu 2**



**1 zu 1\***

wohnen ohne auto, riem



**wohnen ohne auto, riem**

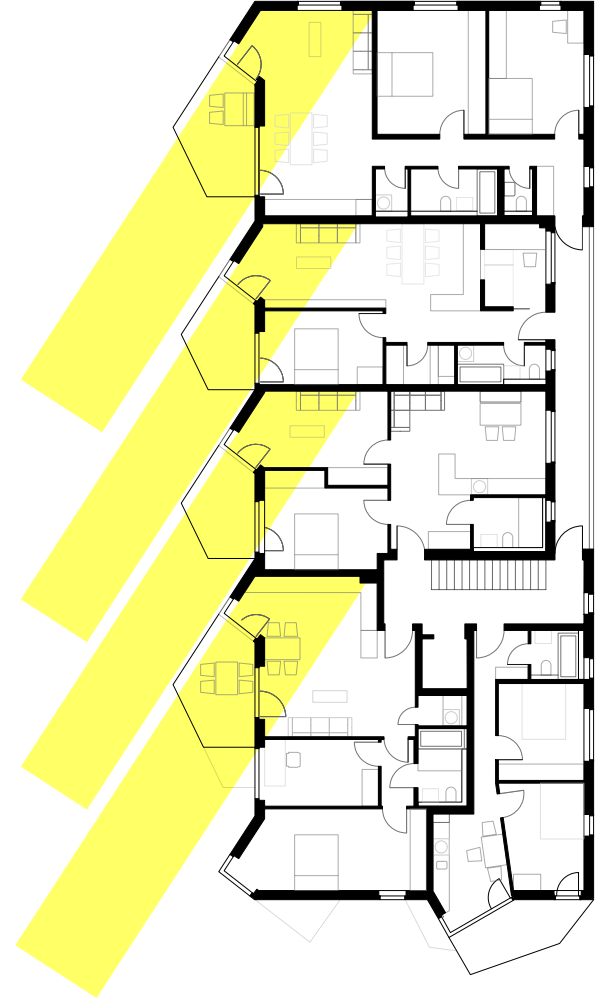
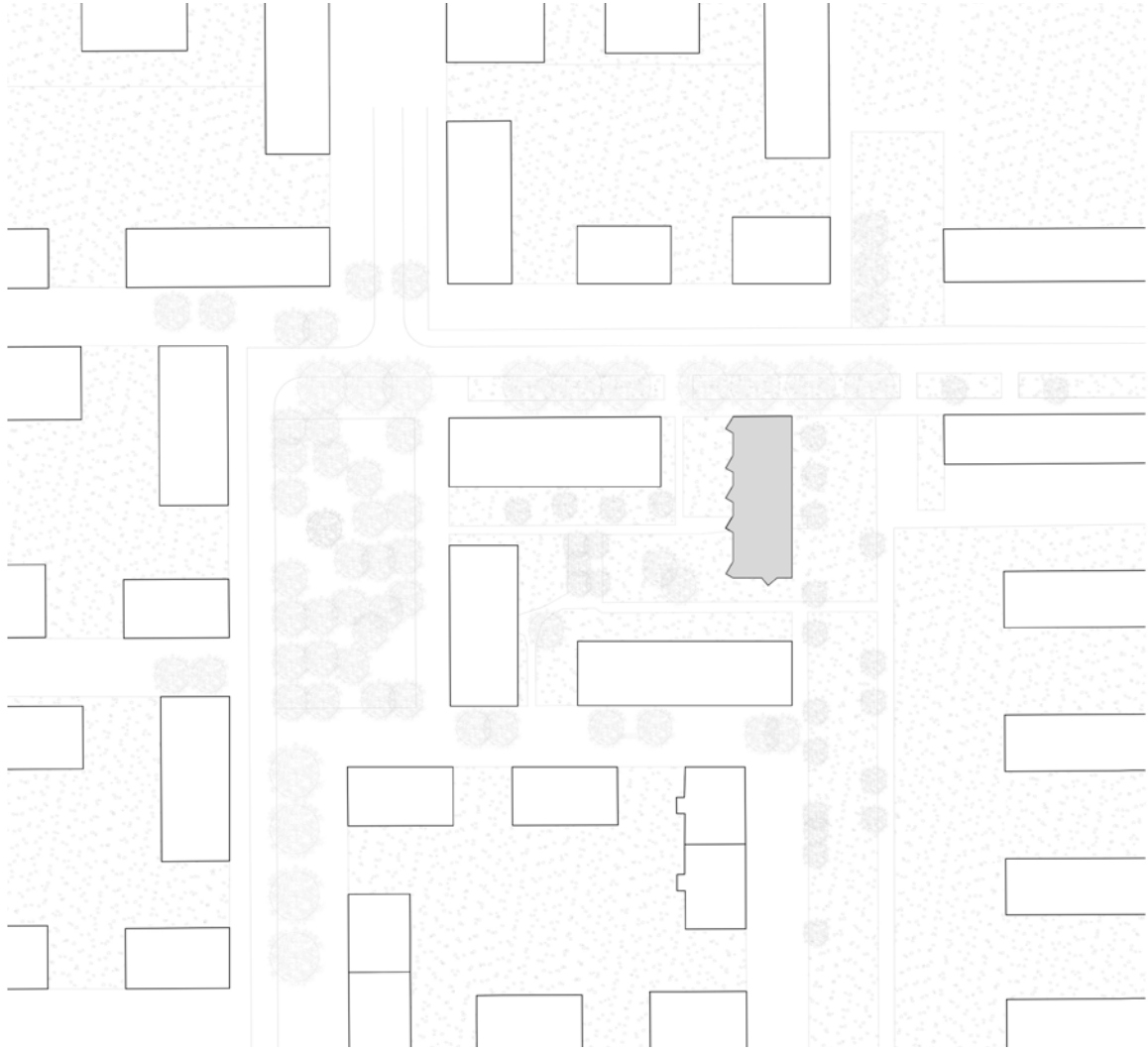


A modern, three-story apartment building with a white facade. The building features a central section with balconies and a decorative patterned facade. The balconies are enclosed with a white metal railing. The patterned facade consists of a grid of small, light-colored squares. The building has several windows, some of which are rectangular and some are square. A person is walking on the ground floor balcony. The building is set against a cloudy sky. In the foreground, there are three bare trees and a grassy area.

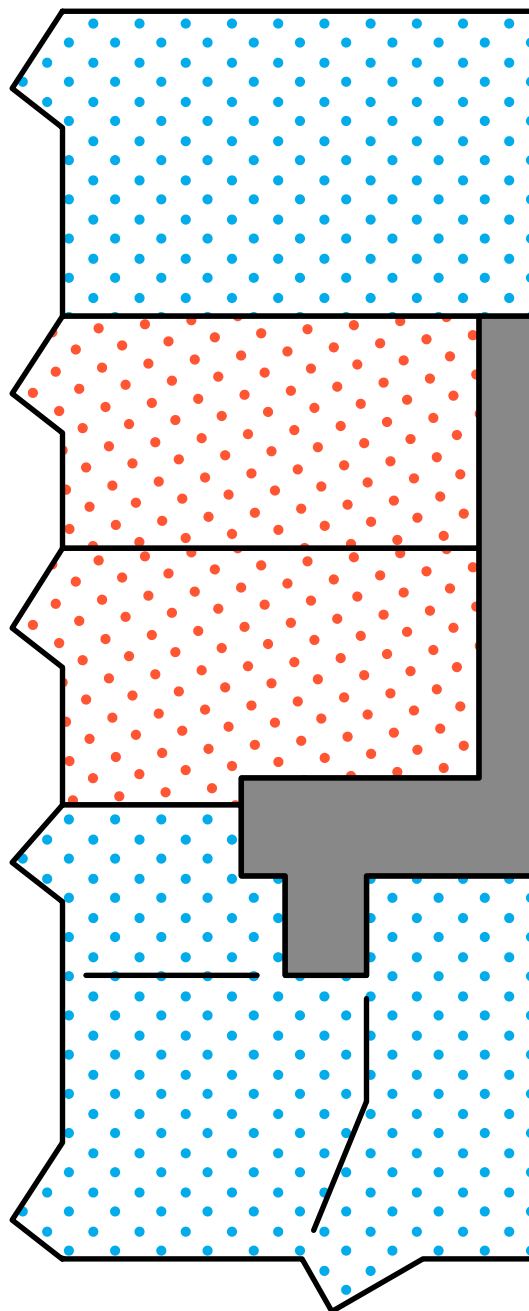
Windows are distributed across the three floors. The ground floor has a large window on the left, a smaller one in the center, and another on the right. The second floor has a large window on the left, a smaller one in the center, and another on the right. The third floor has a large window on the left, a smaller one in the center, and another on the right. The balconies are enclosed with a white metal railing.

Three bare trees are in the foreground, positioned in front of the building. The trees are without leaves, suggesting a late autumn or winter setting. They are spaced out across the width of the building.

A grassy area is in the foreground, extending across the width of the image. The grass is green and appears to be well-maintained.







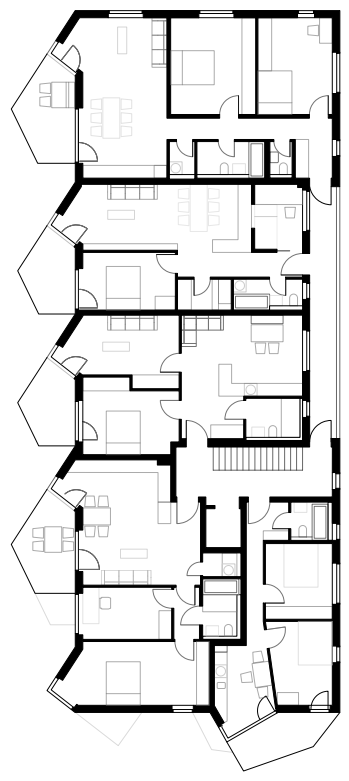
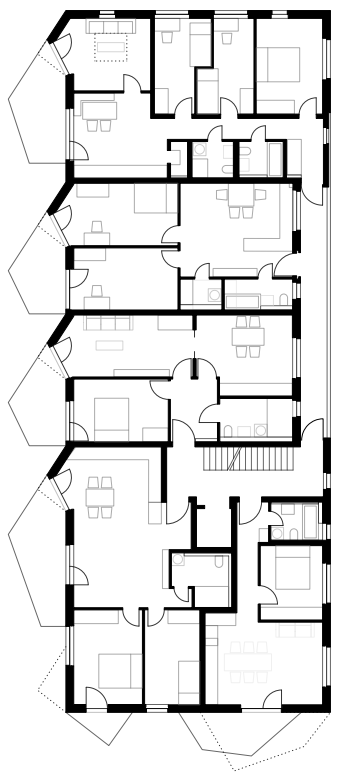
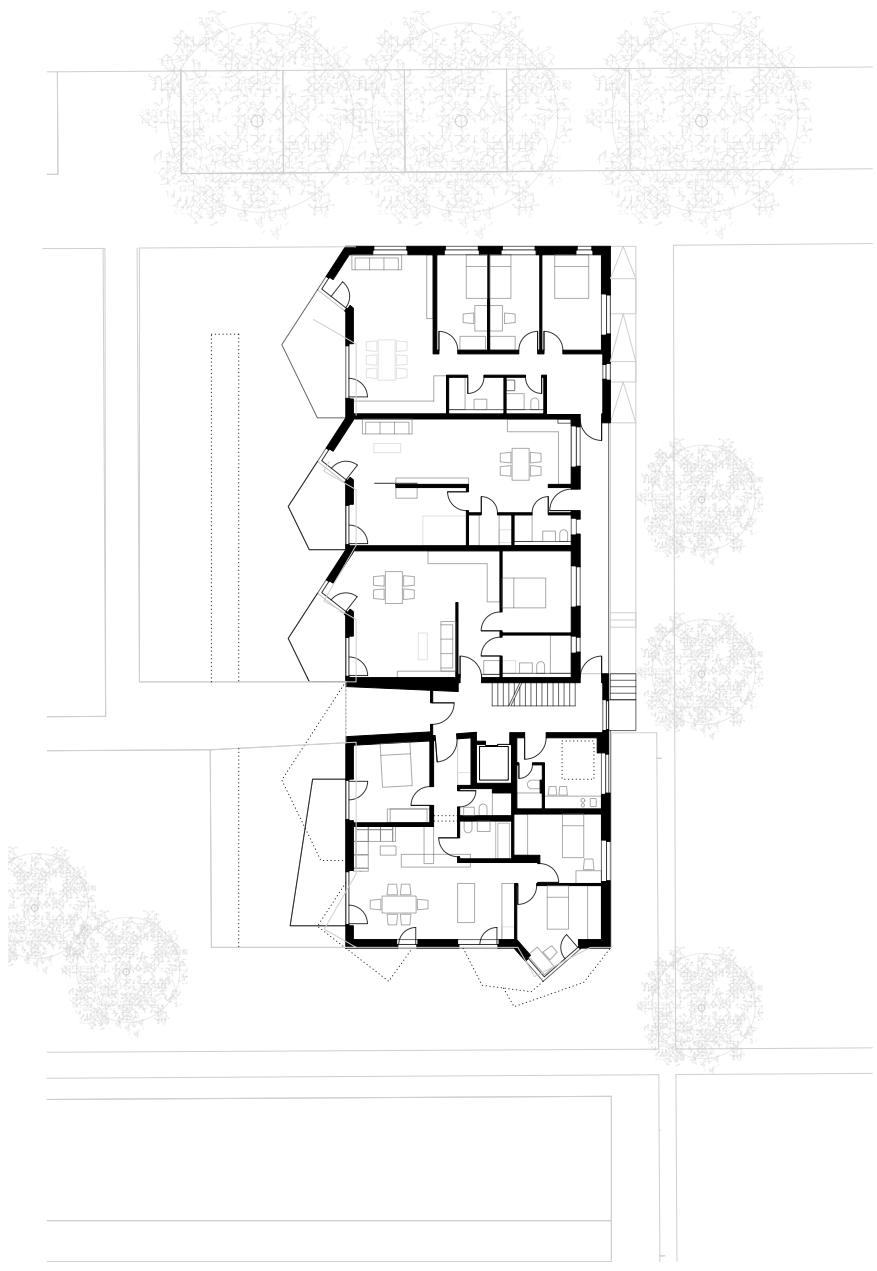
**gross 3-5 Zi**

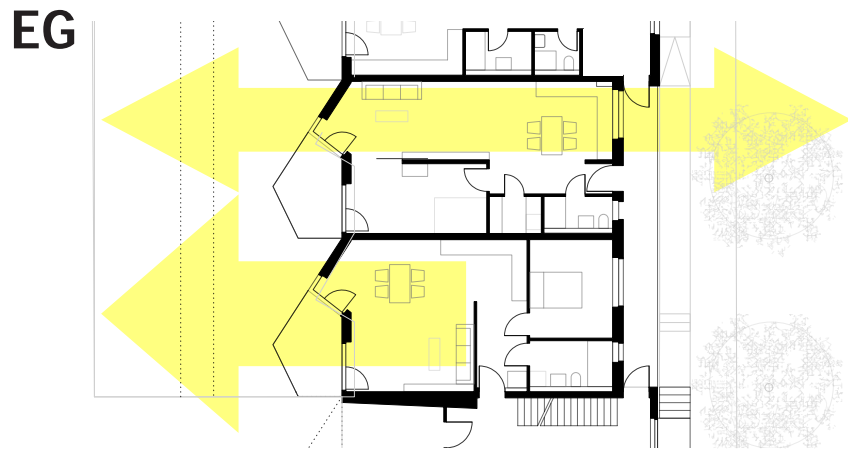
**klein**

**klein**

**verkehr < 10%**

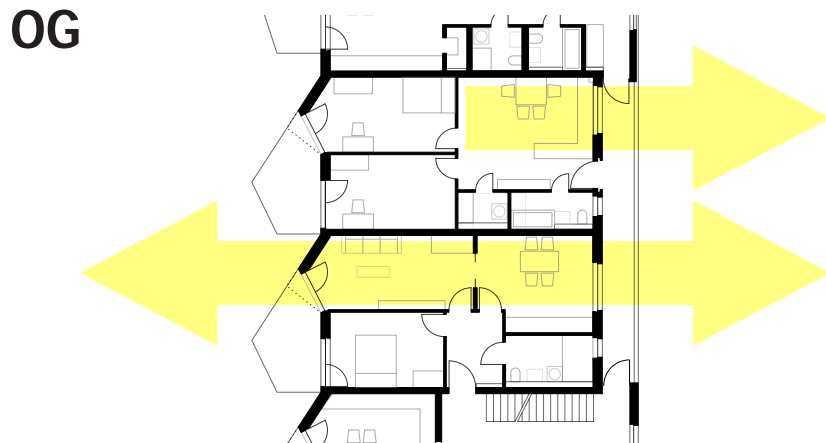
**gross, teilbar**





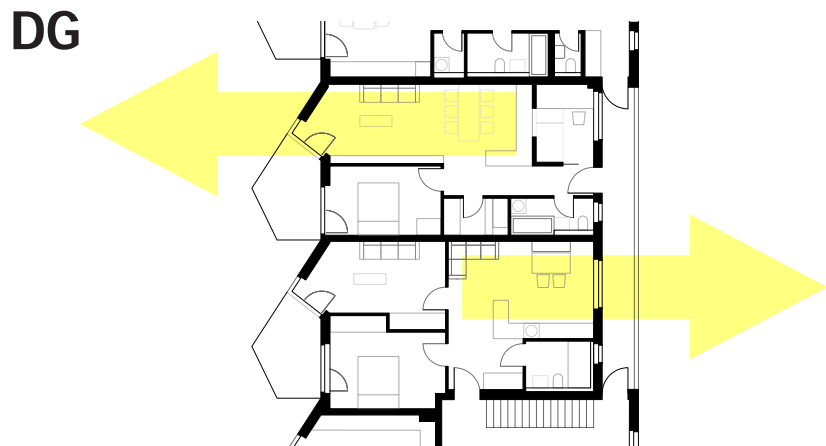
2 Zi durchwohnen -1

2 Zi west breit



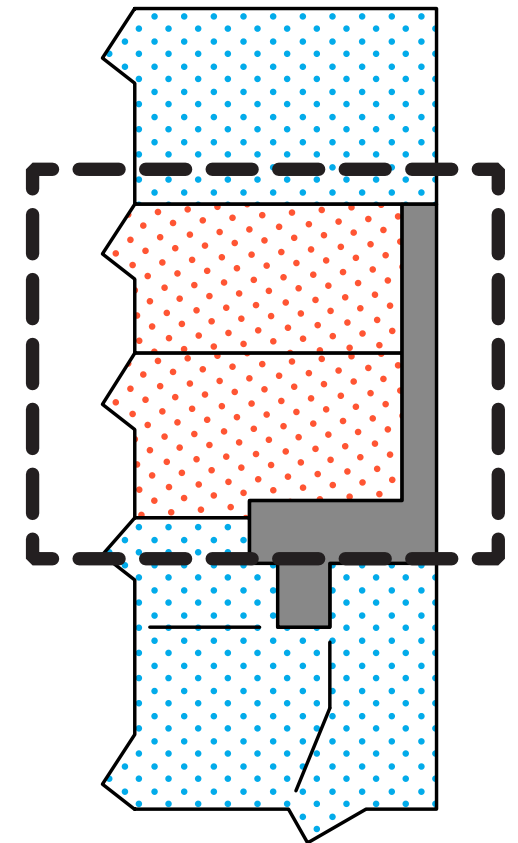
3 Zi ost -1 60 qm

2 Zi durchwohnen -2



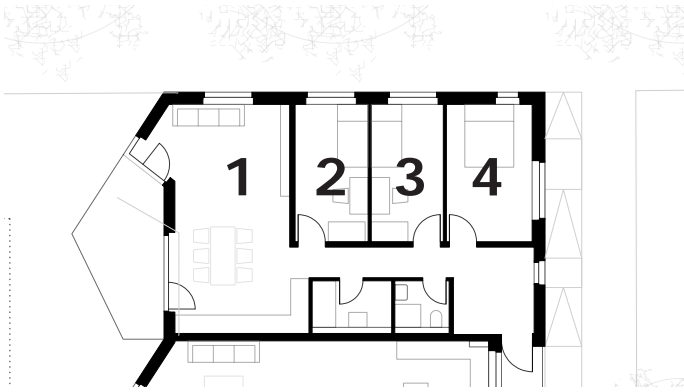
2,5 Zi west

3 Zi ost -2 60 qm



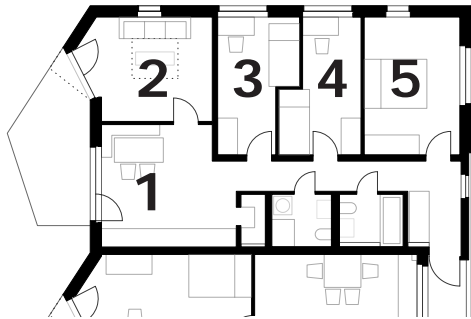
Mittelwohnungen

EG



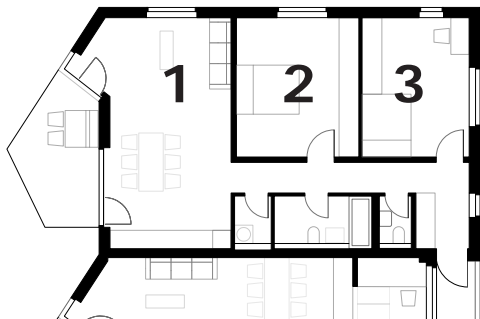
4 Zi

OG

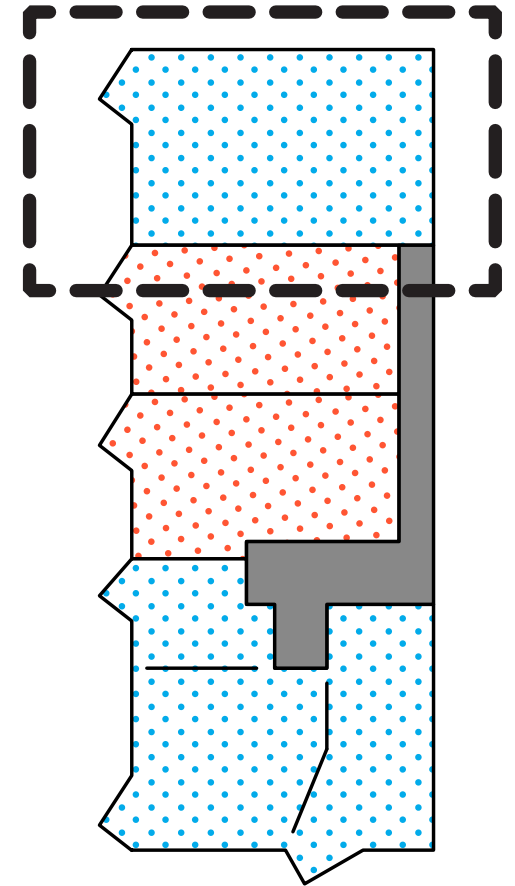


5 Zi 83 qm

DG

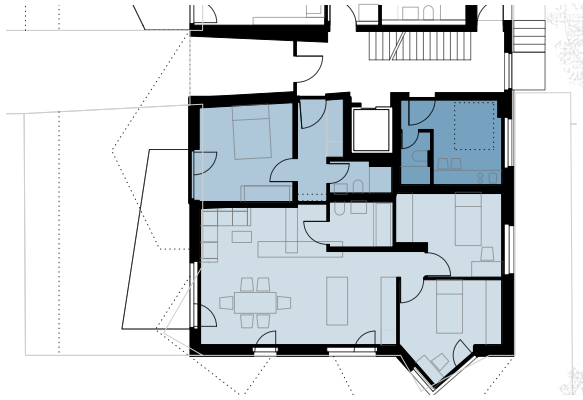


3 Zi



Nordwohnungen

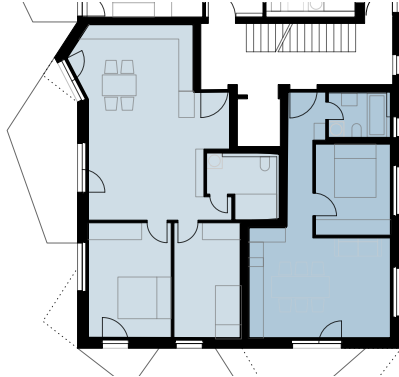
EG



gaesteraum

abtrennbar  
27 qm

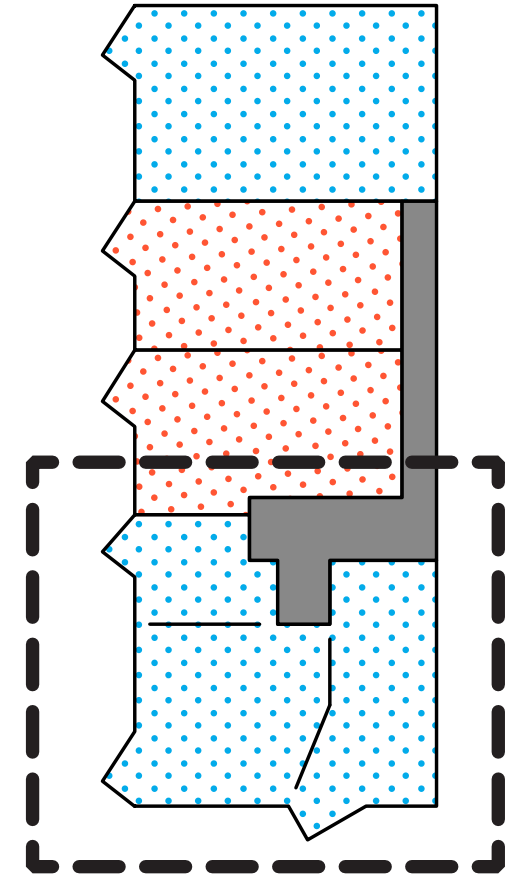
OG



DG



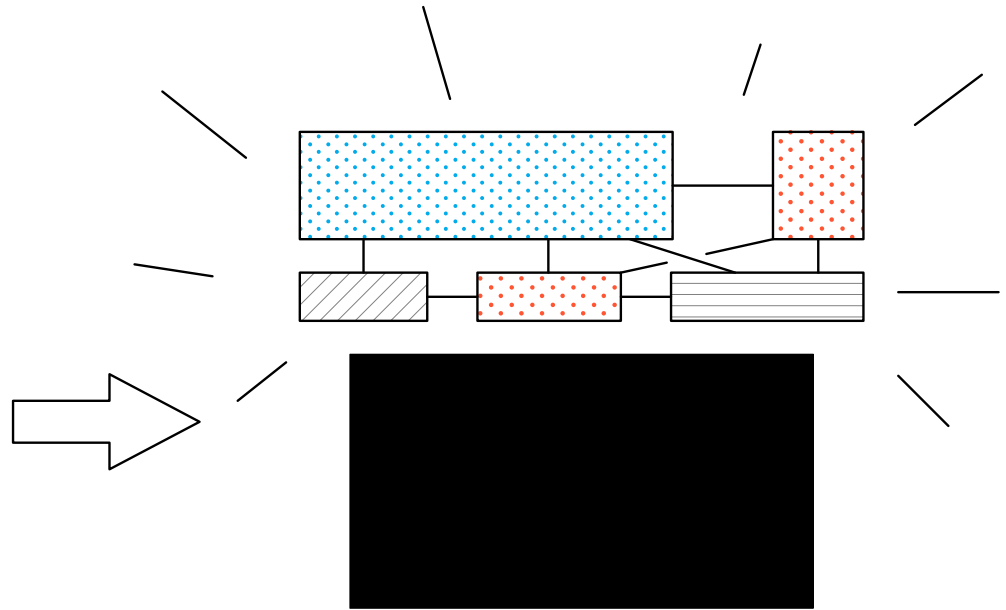
3 Zi 43 qm



Suedwohnungen







**1 zu 5**

**aufstockung maxvorstadt**





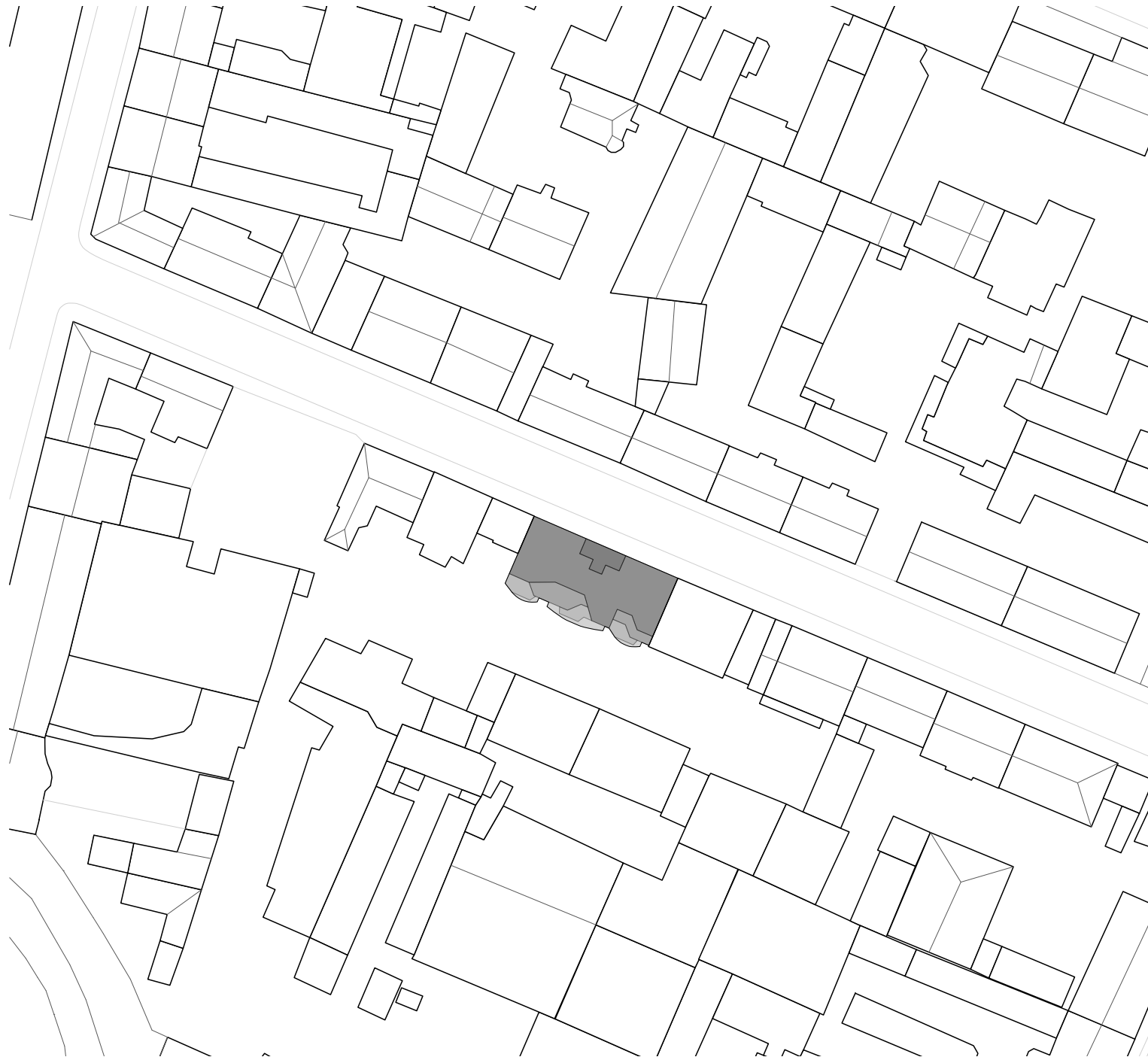
**aufstockung maxvorstadt**

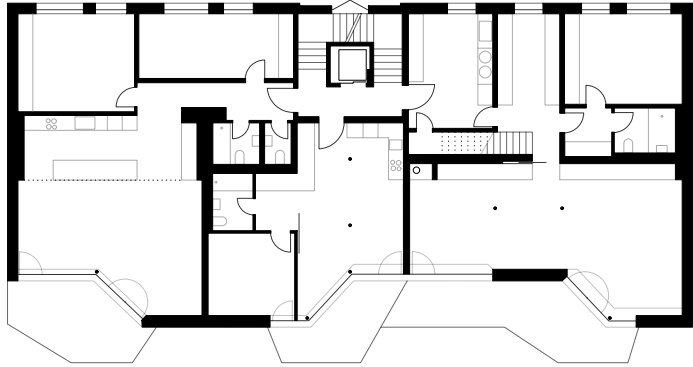




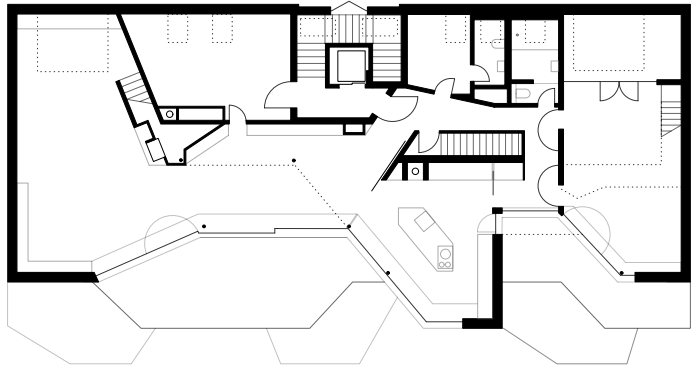




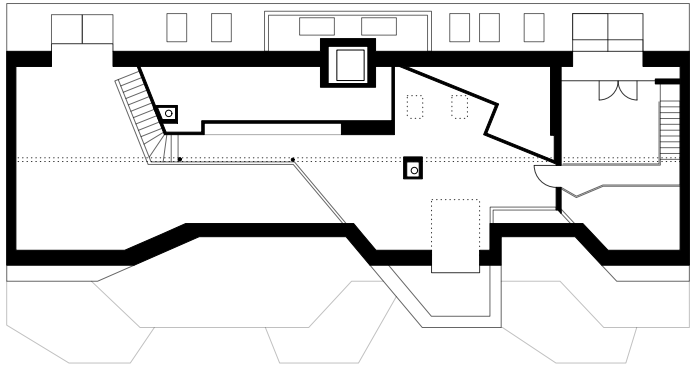




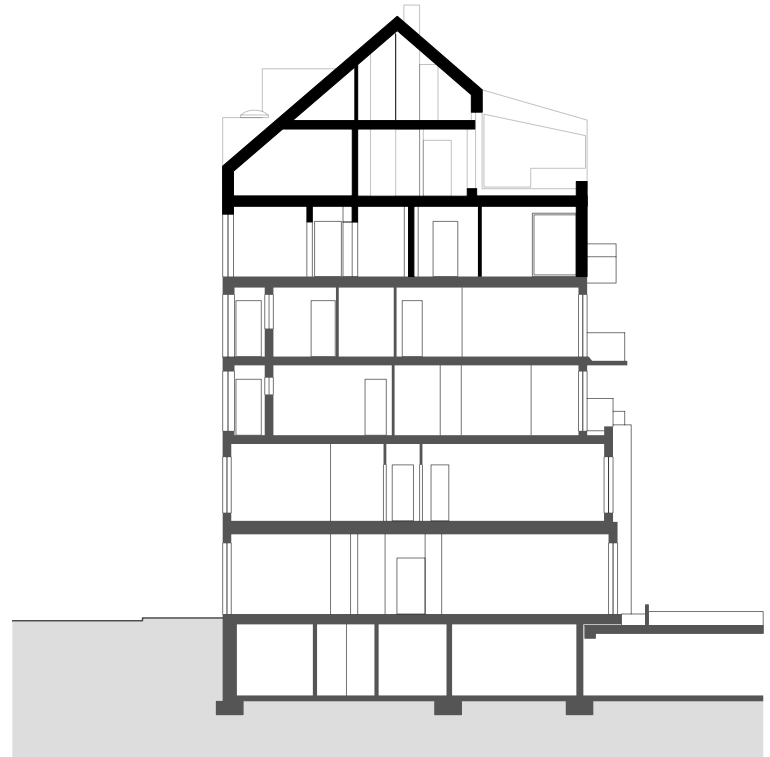
**4.0G**



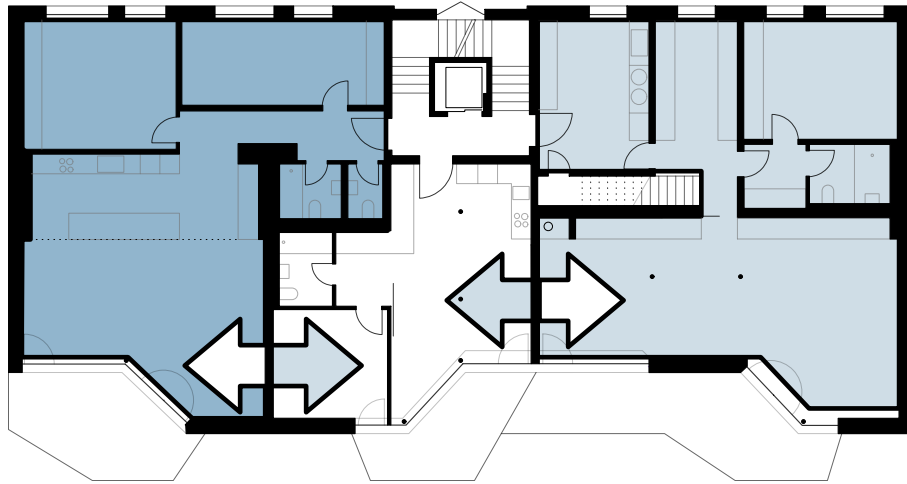
**5.0G**



**6.0G**



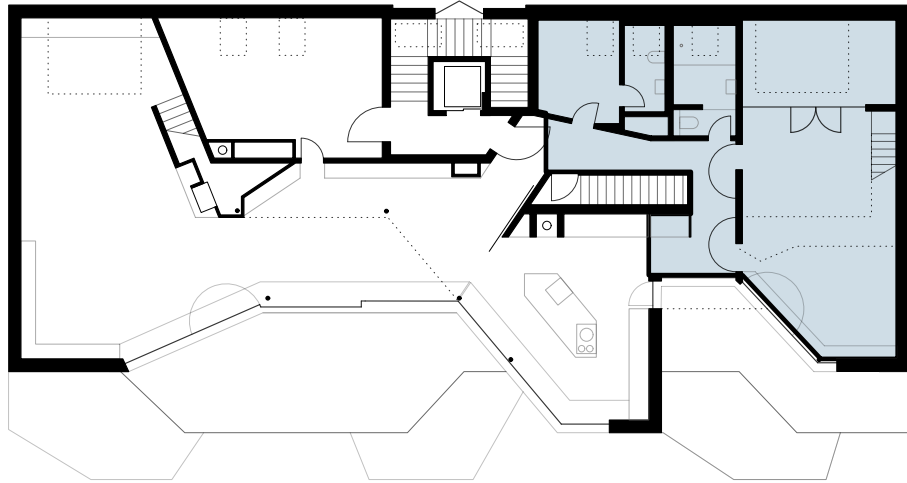
**wohnung 5**



**wohnung 3**

**4.0G**

**wohnung 4**



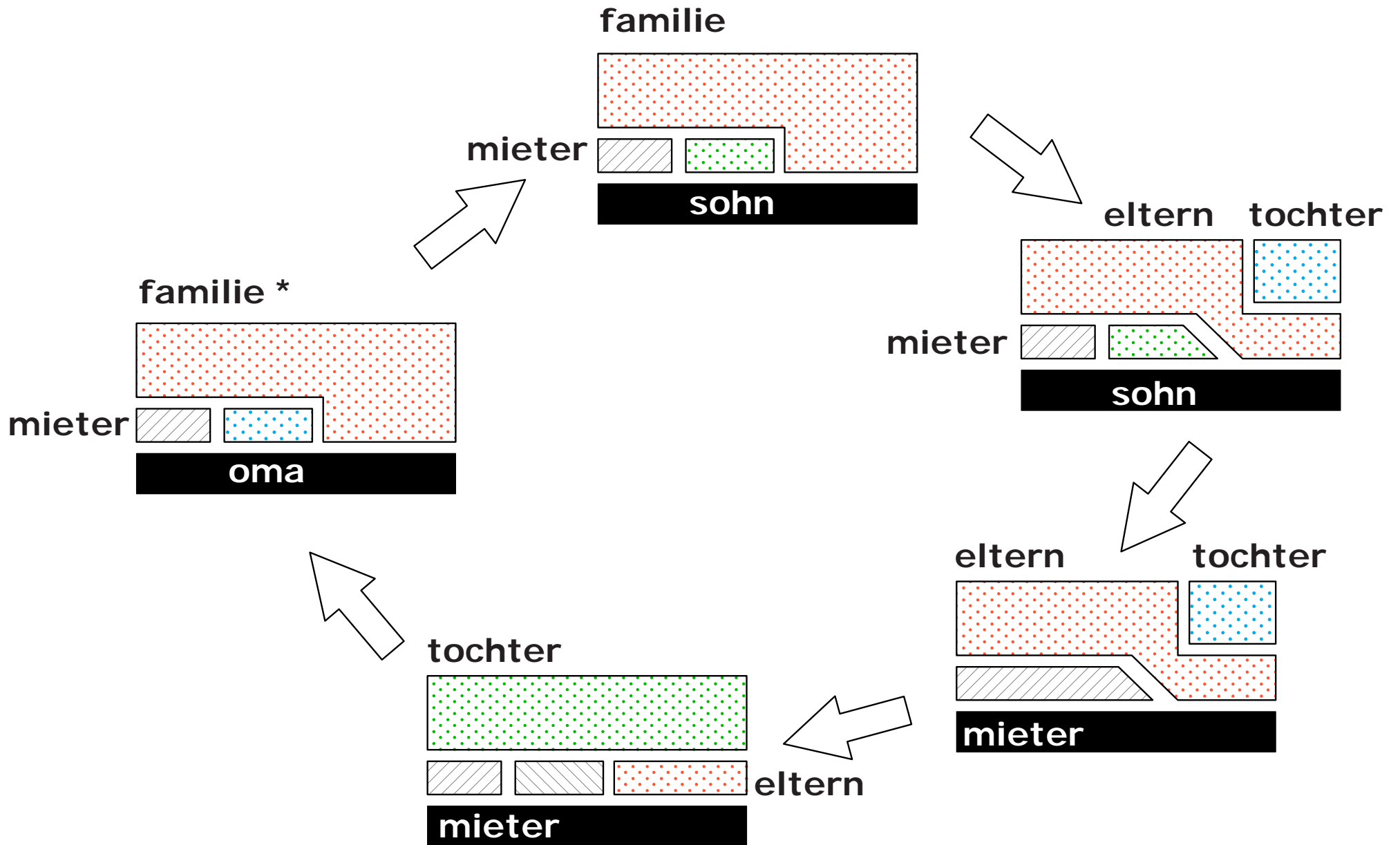
**wohnung 2**

**5.0G**

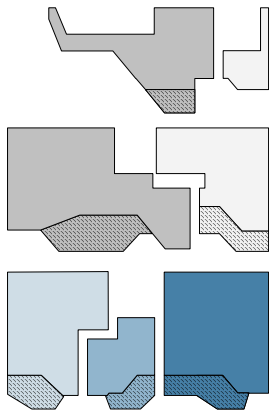
**wohnung 1**

**wohnungsaufteilung**



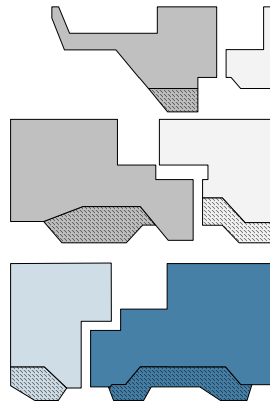
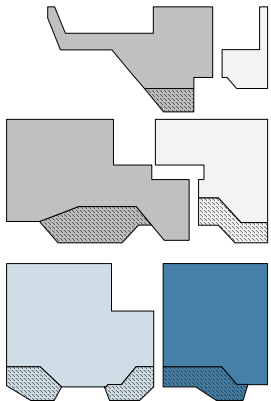


lebenszyklus



5 Whg

- 189 qm
- 82 qm
- 105 qm
- 117 qm
- 52 qm
- Balkonfläche



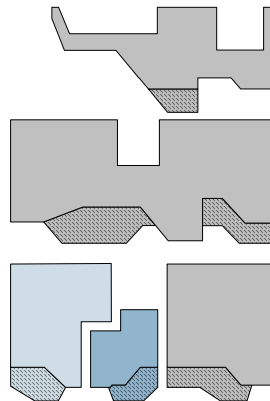
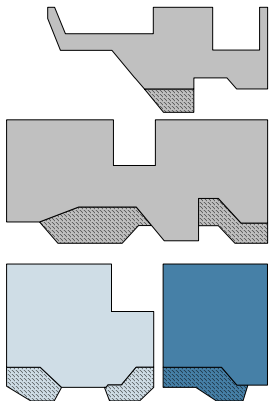
4 Whg

Variante A

Variante B

- 189 qm
- 82 qm
- 156 qm
- 117 qm
- Balkonfläche

- 189 qm
- 82 qm
- 105 qm
- 168 qm
- Balkonfläche



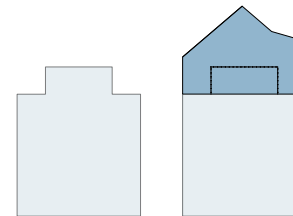
3 Whg

Variante A

Variante B

- 267 qm
- 156 qm
- 117 qm
- Balkonfläche

- 384 qm
- 105 qm
- 52 qm
- Balkonfläche

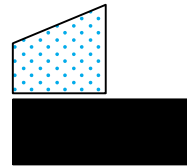
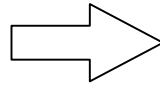


**varianten**

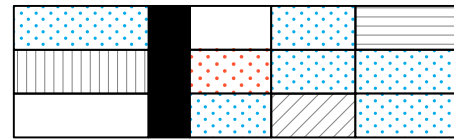
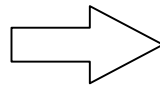
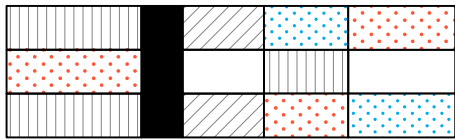




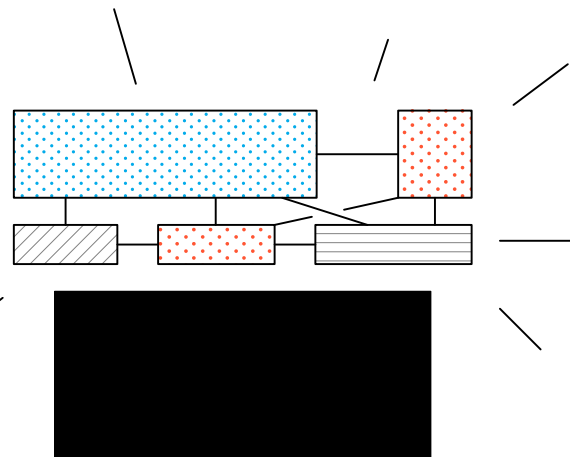
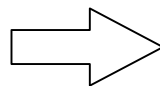
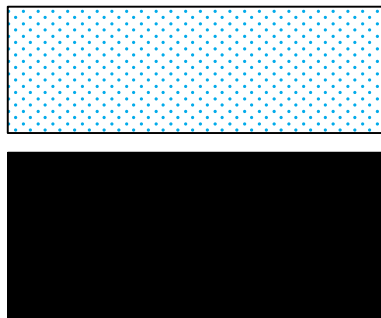
POOL  
LEBER  
ARCH



**1 zu 2**



**1 zu 1\***



**1 zu 5**